

NONPROFIT  
ORG  
U.S. POSTAGE  
PAID  
NEWARK, DE  
PERMIT NO. 2

## Mark Your Calendar

AUGUST 17 – NAA SUMMER CAMPS SHOW OPENS  
AUGUST 18 – NEWARK KIDS ART CARNIVAL  
SEPTEMBER 6-9 – NEWARK FILM FESTIVAL  
SEPTEMBER 7 – "MUSIC TO MY EYES" EXHIBIT  
OPENING  
SEPTEMBER 28 – "GLOBAL WINING" WINE TASTING



"DEVELOPING  
COMMUNITY  
THROUGH  
THE ARTS"

100 ELKTON ROAD  
NEWARK, DE 19711



# ARTFORMS

AUGUST/SEPTEMBER 2007



## Movies that matter!

When the Newark Film Festival unspools on September 6-9, there will be a connection between this 3-year-old event and the Newark Arts Alliance. The 2007 festival includes a silent art auction to benefit the NAA.

You'll be able to take a look at the items at the festival's Web site – [www.newarkfilm.com](http://www.newarkfilm.com) – and place your bids throughout the event at Cinema Center 3 in the Newark Shopping Center. Thanks to producers Barry Schlecker and Lisa Lucas for making it possible!

Artists interested in making a contribution to the auction can contact [lisa@newarkfilm.com](mailto:lisa@newarkfilm.com) or [barry@newarkfilm.com](mailto:barry@newarkfilm.com).

### What's new?

- **A showcase for local filmmakers.** Plans are to dedicate one of the three screens to the work of artists-on-film from this area. Contact Schlecker to make a submission: [barry@network5555.com](mailto:barry@network5555.com),

Continued on page 3



## Kids art carnival: hands-on fun



There's art for everyone at the Newark Kids Art Carnival on Saturday, August 18. The Newark Arts Alliance sponsors this outdoor event from 10 a.m.-2 p.m. at the Academy Building, at the corner of Academy and Main in downtown Newark.

Kids can come any time and take their choice of hands-on art activities, including sun prints, painted rock animals, beaded "thingys," arty hats, stamped backpacks, a large-group mural project, face painting ... and more!

Activities will cost between \$1 and \$5 each and are geared toward ages 4-12. Drinks and snacks will also be available.

No advance registration is required. All proceeds benefit the Newark Arts Alliance. The rain date is Sunday, August 19.

Contact us

NEWARK ARTS ALLIANCE • 100 ELKTON ROAD • NEWARK, DE 19711  
302-266-7266 • [WWW.NEWARKARTSALLIANCE.ORG](http://WWW.NEWARKARTSALLIANCE.ORG)



The Newark Arts Alliance is a locally supported cultural non-profit organization. Our mission is to provide the citizens of greater Newark with the opportunity to explore and display their creativity, as well as participate in cultural events that build community. We provide the means to celebrate life through all forms of artistic diversity.

**NEWARK ARTS ALLIANCE**  
**LOCATION: THE GRAINERY STATION, 100 ELKTON ROAD**  
**HOURS: TUES-FRI 12-7 · SAT 12-4 · CLOSED SUN & MON**  
**PHONE: 302-266-7266 · E-MAIL: INFO@NEWARKARTSALLIANCE.ORG**  
**WEB SITE: WWW.NEWARKARTSALLIANCE.ORG**



The NAA's programs are made possible, in part, by grants from the Delaware Division of the Arts, a state agency dedicated to nurturing and supporting the arts in Delaware, in partnership with the National Endowment for the Arts.



AgoraNet, Inc. of Newark sponsors the NAA Web site hosting and management.

### NAA Advisory Committee

- SUSAN LOGAN administrative director
- TERRY FOREMAN program director, grant writing 302-731-5801
- JEFF SMITH gallery shop
- TERRI GILLESPIE public relations director/ArtForms editor 302-456-1372
- MAUREEN KAMERICK main gallery committee
- BEVERLY WILKINSON poetry readings

### Project Coordinators

- AGORANET webmaster
- PAMELA SKWISH art loop 302-731-9289
- VALERIE PRINCE ArtForms layout & design

### Board of Directors

- |                               |                   |
|-------------------------------|-------------------|
| RAY MAGNANI president         | MELISSA COX       |
| PAUL SCHLOSSER, JR. treasurer | GORDON HETHERSTON |
| BARBARA FRENCH secretary      | MICHELE C. MCCANN |
| CAROL BONCELET                | JEFF SMITH        |
| NANCY BRESLIN                 | KRISTINA WATKINS  |
|                               | LAURA WAY         |

## Thanks for supporting the arts!

### RECENT RENEWING & NEW MEMBERS

<b>Renewing</b> Trish Kuhlman Carla & Don Koss Susan Logan Carole Fox & Family	Lisa Bartolozzi  <b>New</b> Charles Reilly John Viverette	Yaritza Rodriguez Lori Leonard Hope LaChance Melissa Paquette
--	---	--

“It's no good pretending that any relationship has a future if your record collections disagree violently or if your favorite films wouldn't even speak to each other if they met at a party.”

– Nick Hornby

## NEWARK ARTS ALLIANCE MEMBERSHIP FORM

NAME: \_\_\_\_\_

ADDRESS: \_\_\_\_\_

CITY, STATE, ZIP: \_\_\_\_\_

PHONE: \_\_\_\_\_ E-MAIL: \_\_\_\_\_

EMPLOYMENT: \_\_\_\_\_

PLEASE SEND ME INFORMATION ABOUT VOLUNTEER OPPORTUNITIES

#### ANNUAL MEMBERSHIP OPTIONS

\$20-STUDENT     \$30-INDIVIDUAL     \$50-FAMILY     \$100-ORGANIZATION

#### PREMIUM MEMBERSHIPS – INDIVIDUAL OR FAMILY

\$50 TO \$99-FRIEND     \$100 TO \$249-PATRON  
 \$250 TO \$499-BENEFACTOR     \$500 & UP-PICASSO CLUB

MAKE CHECK PAYABLE TO: NEWARK ARTS ALLIANCE  
 100 ELKTON ROAD, NEWARK, DE 19711

FOR OFFICE USE
CK _____
DATE _____
AMT _____

basis at several locations on and near Main Street, including Studio 91, Adria Café, You've Been Framed, Main Street Florist, Hardcastle Gallery, Sinclair's Café, Brewed Awakenings, Central Perk, Gecko Fashions, Home Grown Café, and Caffè Gelato. The spaces will accommodate approximately 12 pieces. Contact Pamela Skwish at 302-731-9289 for details.

### Other arts opportunities

**Get your flick in the fest.** Area filmmakers are invited to submit their work for the Newark Film Festival, set for September 6-9. Plans are to dedicate one of the three screens to local work. To make a submission, contact Barry Schlecker at [barry@network5555.com](mailto:barry@network5555.com), 302-690-5555, or Newark Film Festival, 1700 Shallcross Ave., Wilmington DE 19806.

**Entries for "Life on the Chesapeake."** An art exhibit is part of the celebration of the 100th birthday of James A. Michener, author of "Chesapeake." The Talbot County Visual Art Center will coordinate the Michener Centennial Art Show, which will be held September 7 through October 28 in Easton and St. Michaels, MD.

Two-dimensional original paintings, drawings, or assemblages depicting life on the Chesapeake may be submitted for this show. No photographs, manipulated photos, prints, or reproductions are eligible. Maximum dimensions are 36 inches wide by 48 inches high. Submissions are to be entered as digital images on CD.

The entry fee is \$25. A 25% commission will be charged on sales. The Best in Show award is \$1,000. Other monetary prizes will also be awarded. For details, visit [www.talbot-art-center.org](http://www.talbot-art-center.org).

**DDOA Individual Artist Fellowships.** The deadline is August 15 to apply for a fellowship from the Delaware Division of the Arts. Go to [www.artsdel.org/grants/artistgrants.shtml](http://www.artsdel.org/grants/artistgrants.shtml) – the process is electronic. Questions? Contact Kristen Pleasanton at 302-577-8284 or [Kristin.Pleasanton@state.de.us](mailto:Kristin.Pleasanton@state.de.us).

**It's a natural!** Exhibit your work at Newark Natural Foods during the Sunday Farmer's Market. You can set up a table from 10 a.m.-2 p.m. for just \$5. Bring your own table and set-up. Info: Gina Cimino, [marketing@newarknaturalfoods.org](mailto:marketing@newarknaturalfoods.org) or 302-368-5894.

302-690-5555, or Newark Film Festival, 1700 Shallcross Ave., Wilmington DE 19806.

• **All-festival pass.** A ticket that covers all movies and events is available for \$99.

• **Electronic ticketing.** This option is available both online and at the theater.

### What's showing?

The producers say their mission is to select a "diverse array of films that impact people's lives." In addition to the premiere of the Barbaro film (see box below), other films booked for the festival to date include "I Have Never Forgotten You: The Life & Legacy of Simon Wiesenthal," focusing on his 60 years of tracking down Nazi war criminals; "The Bubble," a comedy-drama about romance between an Israeli and a Palestinian; "For the Bible Tells Me So," an exploration of the issue of religion and homosexuality told through personal interviews with five families;

"The Namesake," the story of a Calcutta couple's three decades in the U.S.; "Chalk," a mockumentary on the perils and passions of several high school teachers; "Monster Camp," a glimpse into the world of live-action role playing; "Headcase," a horror drama from Delaware filmmaker Anthony Spadaccini; and "Jack of Clubs," a comedy from Delaware's Film Brothers, Gordon and Greg DelGiorno.

More information on these films and others under consideration is available at the festival Web site. You can also sign up there for e-mail updates on films as they are booked.

## Barbaro film premiere kicks off NFF

The Newark Film Festival's opening night gala, "Mixer, Music and a Movie," is set for Thursday, September 6, at 7 p.m.

A highlight of the evening is the Delaware premiere of "The First Saturday in May," a documentary centered around the Kentucky Derby that traces the paths of six rising equine stars, including Barbaro. This is the first feature from the Hennegan brothers, sons of a New York Racing Association placing judge. They spent much of their Long Island youth at the racetrack with unprecedented access to the horseracing world.

The gala is co-sponsored by the NFF, the New Castle Chamber of Commerce, and the Downtown Newark Partnership.

# Call to Artists

## WITH THE NAA

### In the Exhibition Gallery

#### September 7-October 6: "Music to My Eyes"

Open, juried show of artwork with a musical theme  
Drop-off: Friday-Sunday, August 31-September 2 • regular hours  
Opening reception: Fri., September 7 • 7-9 p.m.  
Pick-up: Sunday, October 7 • 12-4 p.m.

#### October 12-November 17: "Cityscape/Landscape"

Open, juried show of artwork with a cityscape or landscape theme  
Drop-off: Friday-Sunday, October 5-7 • regular hours  
Opening reception: Friday, October 12 • 7-9 p.m.  
Pick-up: Sun., Nov. 18 • 12-4 p.m.

#### November 23-December 30: Holiday Art Market

Group show of original artwork and fine crafts for holiday gift-giving – all by local artists  
Opening reception: Friday, November 30 • 6-9 p.m.

### Other NAA opportunities

**Get kilns at a discount and benefit the NAA.** Interested in a kiln from L&L (Jupiter, Liberty Bell, Easy-Fire, Durafire, Test/Doll)? You can get a 20% discount, and 5% goes to the NAA. All L&L product information is online at [www.hotkilns.com](http://www.hotkilns.com). To take advantage of this offer, contact Peter Saenger at [peter@saengerporcelain.com](mailto:peter@saengerporcelain.com).

**NAA Art Loop.** Interested in exhibiting your work on the Newark Art Loop? The loop, sponsored by the NAA, is held on a monthly

Continued on page 12

### Who's sporting that sombrero?



### What will YOU wear to the Mad Hatter Gala?

Sunday, November 3  
Reserve your spot at  
[www.newarkartsalliance.org/mosaic.html](http://www.newarkartsalliance.org/mosaic.html)  
(It's NAA Board member Jeff Smith)

## What's up with the NAA Continued from page 10

**Interested in commissions?** The NAA has a membership benefit just for you. Artists can submit a two-page sample of their work to be exhibited in an artist registry portfolio binder at the NAA. Visitors interested in finding, for example, a muralist, jewelry maker, poet, or musician, can flip through the binder and connect with NAA artists. Each artist is limited to two 8.5x11-inch pages. The information must be professionally presented. Artists are encouraged to donate a commission to the NAA when they get work through the book.

### Who's flaunting that fedora?



### What will YOU wear to the Mad Hatter Gala?

Sunday, November 3  
Reserve your spot at  
[www.newarkartsalliance.org/mosaic.html](http://www.newarkartsalliance.org/mosaic.html)  
(It's NAA Board member Michele McCann)

## Village Imports

All handmade, all Fair Trade



**Cool Summer  
Clothes and  
Jewelry**

165 E. Main St., Newark, DE  
302-368-9923 • [www.villageimports.com](http://www.villageimports.com)  
Open later: Mon-Sat 10-8, Sun 12-5

## AgoraNet, Inc.

314 E. Main Street, Suite 1  
Newark, DE 19711  
302-224-2475  
<http://www.agora-net.com>

Web Site Design

Web Site Hosting

Software Development

Connecting businesses to the future since 1996 ...

ages 15 and up due to occasional language and subject matter.  
Info: wordslave@gmail.com or www.worddancing.com.

**Reducing summer hours.** The NAA will be closed Sundays during the summer. We have a shortage of volunteer monitors, and this will help us save on utility costs.

**Expanding drop-off days.** Beginning with the "Music to My Eyes" exhibit in September, drop-off days for artwork will be expanded from one day to three. You can bring your work Friday, Saturday, and Sunday during regular hours.

**More artwork for the Gallery Shop, please!** Jewelry, cards, and unframed art are particularly popular. Do you know artists whose work would sell well? Encourage them to join the NAA and submit their work for the shop. Our policy on commission and work rotation is also on the NAA Web site ([www.newarkartsalliance.org](http://www.newarkartsalliance.org)) in the "Policies" section.

**Arty birthday parties.** Celebrate a child's special day with a party and art project at the NAA. You get use of the classroom for 2.5 hours (\$75), an art instructor for a one-hour project of your choice (\$40), and art supplies (\$3 per child). A party attendant is also available for \$25, but is not required if the parent assists. Info: call the NAA at 302-266-7266.

Continued on page 11

## Dang it, we wanna hang it!

Artists, we love getting work in for the exhibits and the Gallery Shop. We just ask that, for two-dimensional work, you review and follow the guidelines.

For all items to be displayed via the Exhibition Gallery's hanging system or on the shop walls, we require a *hanging wire on the back of the item – no sawtooth hangers or other methods.*

The guidelines are printed in each issue of the newsletter and are available online in the "Policies" section of the Web site.



# What's Up With the NAA

**Good news from the DDOA!** The Delaware Division of the Arts has awarded the NAA \$12,130 for general operating, plus a \$10,000 Public Impact grant. We were cited for a nicely equipped gallery; unique programming (including birthday parties and Art To Go); service to a wide range of people, which provides an opportunity for anyone to become involved in the arts; our intern opportunities; involvement with the Gala; and the fact that we "do a lot with a small amount of money that benefits the community."

**Art for film fest auction.** This year the Newark Film Festival (September 6-9) includes a silent auction to benefit the NAA. To make a donation to the auction, please get in touch with [lisa@newarkfilm.com](mailto:lisa@newarkfilm.com) or [barry@newarkfilm.com](mailto:barry@newarkfilm.com) and they'll get right back to you with the details.

**Worldwide wine.** "Global Wining" is the theme for our next wine tasting event on Friday, September 28, from 7-9 p.m. at the NAA.

We'll have vintages from around the world presented by State Line Liquors, plus live "world music," a silent auction, appetizers, and a raffle. The donation is \$20 at the door.

**The move.** The NAA Board and staff are continuing to work on the relocation issue. There's no news to report at this time.

**Word Dancing.** This lively poetry group meets Tuesdays at 8 p.m. at the NAA. An open mic is always part of the evening, coupled with featured poets, SLAMs, and special performances. Admission is \$3. The sessions are recommended for

Continued on page 11

## Who's showing off those chapeaux?



## What will YOU wear to the Mad Hatter Gala?

Sunday, November 3

Reserve your spot at

[www.newarkartsalliance.org/mosaic.html](http://www.newarkartsalliance.org/mosaic.html)

(It's NAA Board member Laura Way and Executive Director Susan Logan)

# Spotlight on Community Arts

**Wilmington Craft Mafia wants you!** Are you part of the indie design movement? The Wilmington Craft Mafia is actively seeking new members – independent designers, crafters, and artists.

This networking group was formed in 2006 to support and promote its members and their artistic businesses, and to support independent art and design in general.

The craft mafia concept was the brainchild of nine talented women from Austin, TX. There are now craft mafias in most major metropolitan areas across the U.S. Any size business is welcome to apply. Just visit [wilmingtoncraftmafia.com](http://wilmingtoncraftmafia.com).

**Just wanna ride on my motorcy ...** The Bike & Blues Festival will ride into downtown Newark on Saturday, August 18. From 2-9:30 p.m. there'll be a bike show, live entertainment on two stages, motorcycle-related vendors, and a motorcycle parade. All proceeds benefit the victims of motorcycle accidents.

For more information, call 302-378-3701 or 302-737-4166, or visit [www.motorcycleaccidentvictims.org](http://www.motorcycleaccidentvictims.org).

**Hands on Humanities.** The Biggs Museum in Dover is sponsoring a series of "Hands on Humanities" workshops led by Delaware artists, writers, and fine-art instructors. Classes include: Aug. 21 & 23, 2-4 p.m., Studio Painting with Catherine Drabkin, \$30; Sept. 25 & 27, 2-4 p.m., Short Story Workshop with Roz Unruh, \$30; Oct. 16 & 18, 2-4 p.m., Studio Painting with Andrew Criss, \$30. The fees include all art materials. Call 302-674-2111 to reserve your space.

## ADVERTISE IN ARTFORMS

- Your ad reaches readers who love the arts, both in print (about 750 circulation) and in the download at [www.newarkartsalliance.org](http://www.newarkartsalliance.org) – for the same low price!
- 2.25" block—\$20 each or \$70 for four insertions
- 2.25" x 4.5" (vertical or horizontal)—\$40 each or \$140 for

four insertions

- Ads do not have to run in consecutive issues to get the multiple-insertion rate
- Camera-ready, or we design – no charge

Contact Terri Gillespie,  
302-456-1372 or  
[swingsambasoul@gmail.com](mailto:swingsambasoul@gmail.com).

## Sidewalk Chalk Festival makes its mark

This year's Sidewalk Chalk Festival had perfect sunny weather for the 45 artists who participated. Drawings appeared along the sidewalks of downtown Newark from Clothes in the Past Lane to Village Imports, plus one drawing at Captain Blue Hen Comics.

The event is sponsored each year by the Newark Arts Alliance in conjunction with the Newark Food & Brew Festival. Registrants received a goody bag with chalk, a comic book from Captain Blue Hen, and coupons from several local businesses.

After some serious deliberation, judges Carol Boncelet and Kristina Watkins, both NAA Board members, selected 13 winners to receive prizes with a total value of over \$800. The winners were: age 8 and under, Olivia Robitaille; age 9-13, Carrie Hinte; age 14-21, Brenna Crowther; adult, Steve Anderberg; professional artist, Michael Schwartz; group entry, Sarah Cossart and Connor Gerstley. Judges' Choice awards went to Eric Collins, Stephen & Zoey Webb, Robert Ketchum Jr., Katie Buell-Fleming, Erin Dooley, Helen Moore, and Jodi Netzer.

Many thanks to the Downtown Newark Partnership for donating \$135 for cash prizes, and to the following merchants for sponsoring spaces and/or prizes: National 5 & 10, Caffé Gelato, Grassroots Handcrafts, Starbucks, Captain Blue Hen Comics, Bloom, Crystal Concepts, Clothes in the Past Lane, Village Imports, Peace A Pizza, Gecko Fashions, Flavor, Klondike Kate's, Romanick Pottery, Home Grown Café, Switch, Finley's Art Shoppe, Cinema Center 3, Subway, and The Learning Station.



### Summer Hours at the NAA

Tues.-Fri. noon-7 p.m.

Sat. noon-4 p.m.

Closed Sunday & Monday

100 Elkton Road

## In the Exhibition Gallery

### OUR CURRENT EXHIBIT

#### July 13-Aug. 11: "Animania"

Trish Middings Kuhlman is the juror and featured artist for this exhibit, which focuses on artwork with an animal theme. Other artists with work in this show include Lori Leonard, Peggy J. O. Schultz, Matt Laine, Elisabeth Bard, Robanne Palmer, Sean Gerstley, William G. Kreisel, Richard Ortolano, Celeste Kelly, Heather Siple, Stevie French, Nancy Breslin, Beth Trepper, and Pamela Skwish.

#### Aug. 17-Sept. 1: NAA Summer Camps Show

Group mixed media show of work from our summer classes and Camp Imagine

#### Sept. 7-Oct. 6: "Music to My Eyes"

Open, juried show of artwork with a musical theme  
Opening reception: Fri., Sept. 7 • 7-9 p.m.

**For a full list of 2007 exhibits, visit [www.newarkartsalliance.org](http://www.newarkartsalliance.org).**

### NAA Exhibition Gallery Guidelines

For juried shows, artists may submit up to three pieces. The submission fee is \$5 per artwork. This charge supports promotional and other costs associated with the exhibit. If the fee prohibits you from participating, please write to the Exhibition Gallery Committee and request a waiver.

Please include label on each entry with your name, the title of the work, the medium (acrylic, raku, computer scan, etc.), your phone number and e-mail address, and a selling price, if applicable. (Work may be marked NFS.) All 2-D work must have a hanging wire on the back and must be framed in keeping with professional standards (no dirty mats, damaged glass, chipped frames, etc.).

Commission on sales to the NAA is 20% for working members (at least four volunteer hours per month), 30% for non-working members, and 40% for non-members.

**NAA: DEVELOPING COMMUNITY THROUGH THE ARTS**

## Where to Catch Their Work

**"People of the Peoples' Republic" travels.** The photographs of Chinese people that Peggy J. O. Schultz showed at the NAA in April are on display until the end of August at the Wilmington Music School. Note cards and small matted prints of some of the larger photographs are also available at the new exhibit.

**StoryPeople Storytelling.** Prints, cards, books, and sculptures by internationally known artist Brian Andreas will be on exhibit Wednesday, August 15, from 1-3 p.m. at You've Been Framed, 172 E. Main St., Newark.

**Handcrafts show.** Hand-turned wooden bowls by William Raker, jewelry by Charlu Schilling, and hand-blown and sculptured art glass by Doug Conner will be shown at a new event, the 1st Annual Handcrafts Show, from September 1-29 at You've Been Framed, 172 E. Main St., Newark. The artists' reception is set for Thursday, September 6, from 6-8 p.m.

### Where can people catch your work?

E-mail [info@newarkartsalliance.org](mailto:info@newarkartsalliance.org) to share your exhibits, projects, and arts activities. The deadline is the 15th for the next month's issue.

**DEADLINE DEADLINE DEADLINE DEADLINE**

The deadline for the September-October issue of ArtForms is August 20.

## GREAT GIFTS AT THE NAA GALLERY SHOP



Jewelry, poetry, ceramics, photos, paintings, funky furniture, scarves, and much more - created by our members



## WITH THE NAA

At the NAA unless otherwise listed

### "Animania"

Through August 11

### NAA Summer Camps Show

August 17-September 1

### Newark Kids Art Carnival

Saturday, August 18 • 10 a.m.-2 p.m.  
Academy Building Lawn

### "Music to My Eyes" Exhibit

Opening reception: Friday,  
September 7 • 7-9 p.m.

### "Global Wining" wine tasting

Friday, September 28 • 7-9 p.m.

## NAA ART GROUPS

At the NAA unless otherwise listed

### Loose Threads – Artists Group

Fiber arts, painting, jewelry & more  
3rd Wed. @ 7 p.m.  
Info: Laura Spencer, 302-453-1351

### NAA Advisory Committee

2nd Wed. @ 6 p.m.

### NAA Board of Directors

Call for date & location

### NAA Exhibition Gallery Committee

1st Mon. @ 5:30 p.m.  
Info: Maureen Kamerick,  
302-453-8866

### NAA Gallery Shop Committee

4th Wed. @ 7 p.m.  
Info: Jeff Smith, 302-368-1089

### NAA Painting Group

Bring your own supplies  
Taking a break through August!  
Resumes in September, 1st & 3rd

Wed. @ 9:30 a.m.-noon  
Info: Pamela Skwish, 302-731-9289

### Word Dancing: Poetry Reading, Open Mic & Slam

Tues. @ 8-10 p.m. – \$3 cover  
Suggested for age 15 & up  
Info: wordslave@gmail.com or  
www.worddancing.com

## NEWARK ART SCENE

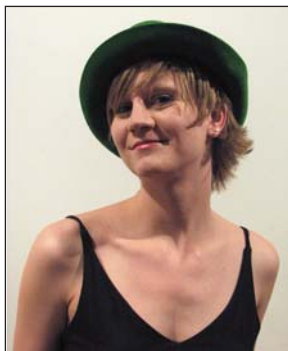
### Bike & Blues Festival

Saturday, August 18 • 2-9:30 p.m.  
Downtown Newark

### "Picasso at the Lapin Agile"

**Chapel Street Players**  
Sept. 28, 29, Oct. 5, 6, 12 & 13 ™  
8 p.m.; Oct. 7 & 13 @ 2 p.m.

Who's buzzing around  
in that bonnet?



What will YOU wear to the  
**Mad Hatter Gala?**

Sunday, November 3

Reserve your spot at

[www.newarkartsalliance.org/mosaic.html](http://www.newarkartsalliance.org/mosaic.html)  
(It's NAA Board member Melissa Cox)

Chapel Street Playhouse  
Info & tickets: 302-368-2248 or  
[www.chapelstreetplayers.org](http://www.chapelstreetplayers.org)

### Delaware Accordion Club

3rd Sun. @ 2-5 p.m.  
First State Diner  
Info: 302-738-7378 or  
[www.delawareaccordionclub.com](http://www.delawareaccordionclub.com)

### First Annual Handcrafts Show

September 1-29  
Reception: Thursday, September 6  
• 6-8 p.m.

You've Been Framed, Main Street

### Newark Film Festival

September 6-9  
Cinema Center 3

### Newark International Folkdancers

No partner necessary  
Fri. @ 8 p.m.  
George Wilson Community Center  
Info: 302-737-7321 or  
[Ismat@udel.edu](mailto:Ismat@udel.edu)

### Newark Open Bluegrass/ Oldtime Jam

Any skill level, bring instruments  
Thurs. @ 7:30-10 p.m.  
St. Thomas Episcopal Church

### Scottish Country Dancing

No charge, no partner necessary  
Mondays @ 7:30 p.m.  
St. Thomas Episcopal Church  
Info: 302-368-2318

## ARTS IN THE AREA

All Delaware unless otherwise listed

### Delaware Valley Bluegrass Festival

August 31-September 1  
Salem County Fair Grounds, NJ  
[www.delawarevalleybluegrass.org](http://www.delawarevalleybluegrass.org)

## NAA members: Get your work in the Gallery Shop!

The opportunity to sell work in the Gallery Shop at the Newark Arts Alliance is one of the benefits of NAA membership. All types of artwork are welcome: paintings and prints, ceramics, jewelry and other "wearable art," music and poetry – and much more.

Artwork can be dropped off during regular NAA hours. The Gallery Shop Committee juries submissions during the fourth week of each month. Accepted work is displayed for one to three months.

The jury criteria are: originality (no kits or copies); well-crafted, skillful execution; and professional presentation. All 2-D work must be framed with picture wire for hanging, or mounted, matted, and covered with acetate. Unframed flat art should not exceed 24 inches in any dimension.

All work must be for sale. The commission to the NAA is 30% for non-working members and 20% for working members (at least four hours per month). For details, see the Gallery Shop information in the "Policies" section on the Web site (bottom of the home page).