

NONPROFIT
ORG
U.S. POSTAGE
PAID
NEWARK, DE
PERMIT NO. 2

Mark Your Calendar

"THROUGH THE ARTIST'S EYE" EXHIBIT -
OPENS JUNE 17
NAA TEACHERS SHOW - OPENS JULY 22



"DEVELOPING
COMMUNITY
THROUGH
THE ARTS"

100 ELKTON ROAD
NEWARK, DE 19711



ARTFORMS

JUNE/JULY 2005

Auction and teen artists bloomed in May

The successful bidders certainly "got art" as they left the Newark Country Club on May 7 with paintings, jewelry, photos, quilts, event tickets, pottery, baskets of goodies - and even a painted door.

"Got Art?" - The Brush With Fame Art Auction & Gala - took in about \$13,000 in ticket and art sales, generating a profit of about \$8,000.



Lisa Bartolozzi, juror for the "Future Famous Fine Artists" exhibit, gave a talk at the opening reception.

Later in the month, the "Future Famous Fine Artists" exhibit, work by students ages 14-18, drew a crowd. At the opening, juror Lisa Bartolozzi gave a slide show and discussed the career of a professional artist.

Juror's Awards



Karoline Wileczek shared a laugh at the auction.



Newark High School art teacher Pat Yount visited with "Future Famous Fine Artists" at the opening.



The painted door caught Susan Moore's interest at the "Got Art?" auction.

were presented to **Mac Nagaswami**, Sanford School, for "Woman 3"; **S. Michael Cooper**,

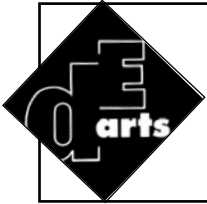
Continued on page 3

Contact us

NEWARK ARTS ALLIANCE • 100 ELKTON ROAD • NEWARK, DE 19711
302-266-7266 • WWW.NEWARKARTSALLIANCE.ORG



The Newark Arts Alliance is a locally supported cultural non-profit organization. Our mission is to provide the citizens of greater Newark with the opportunity to explore and display their creativity, as well as participate in cultural events that build community. We provide the means to celebrate life through all forms of artistic diversity.



The NAA's programs are made possible, in part, by grants from the National Endowment for the Arts and the Delaware Division of the Arts, a state agency committed to promoting and supporting the arts in Delaware. The Delaware Division of the Arts provides technical and financial assistance to artists and arts programs and serves as a clearinghouse for information on the arts.

NEWARK ARTS ALLIANCE

LOCATION: THE GRAINERY STATION, 100 ELKTON ROAD

HOURS: TUES-FRI 11-7 • SAT 11-5 • SUN 12-4 • CLOSED MON

PHONE: 302-266-7266

E-MAIL: INFO@NEWARKARTSALLIANCE.ORG

WEB SITE: WWW.NEWARKARTSALLIANCE.ORG

NAA Advisory Committee

- SUSAN LOGAN administrative director
- TERRY FOREMAN program director, grant writing 302-731-5801
- DRAGONFLY LEATHRUM-SIMONS murals
- DORIS CROWLEY gallery shop
- TERRI GILLESPIE public relations director/artforms editor 302-456-1372
- LARRY KELTS writers' projects
- MAUREEN KAMERICK main gallery committee
- RICH BOUCHER & BEVERLY WILKINSON poetry readings

Project Coordinators

- MATTHEW LOEB webmaster
- PAMELA SKWISH art loop 302-731-9289
- VALERIE PRINCE artforms layout & design

Board of Directors

- RAY MAGNANI president
- PAUL SCHLOSSER, JR. treasurer
- BARBARA HUGHES secretary
- STEVE AMICK
- CAROL BONCELET
- BARBARA FRENCH
- GORDON HETHERSTON
- MICHELE C. MCCANN
- TODD MOTTO

Thanks for supporting the arts!

RECENT RENEWING & NEW MEMBERS

| | | |
|--|--|---|
| Friends Rafert Family | Deborah Arnold Eileen Steele Regine Tierney Larry & Diane Kelts Andrea Pickens Jeff Burger Caroline Golt Marijke Van Buchem Bruce Turner Carol & Sierra Fox | New Members Shayna Greenblatt Taylor Shelman Howard Family Donna Planck Todd Holcomb Kristyn Clarke Ted Wells Alex Stachnik Caroline Zubela |
| Renewing Members Linda Walburn Andrew Morgan Bethany Economos Pat Baldwin Beverly Lawrence & Family Herb Sargeant | | |

"In our life there is a single color, as on an artist's palette, which provides the meaning of life and art. It is the color of love."

- Marc Chagall

NEWARK ARTS ALLIANCE MEMBERSHIP FORM

NAME: _____

ADDRESS: _____

CITY, STATE, ZIP: _____

PHONE: _____ E-MAIL: _____

EMPLOYMENT: _____

PLEASE SEND ME INFORMATION ABOUT VOLUNTEER OPPORTUNITIES

ANNUAL MEMBERSHIP OPTIONS

\$15-STUDENT \$30-INDIVIDUAL \$50-FAMILY \$65-ORGANIZATION

PREMIUM MEMBERSHIPS-INDIVIDUAL OR FAMILY

\$50 TO \$99-FRIEND \$100 TO \$249-PATRON
 \$250 TO \$499-BENEFACTOR \$500 & UP-PICASSO CLUB

MAKE CHECK PAYABLE TO:
 NEWARK ARTS ALLIANCE
 100 ELKTON ROAD, NEWARK, DE 19711

FOR OFFICE USE
 CK _____
 DATE _____
 AMT _____

In the Main Gallery

OUR CURRENT EXHIBIT

June 17-July 16
"Through the Artist's Eye"
NAA Members Open Show
 Opening reception:
 Fri., June 17, 7-9 p.m.

Aug. 19-27
NAA Summer Camps & Classes Show
Work by students in Camp Imagine and other NAA programs
 Opening reception:
 Fri., Aug. 19, 7-9 p.m.

COMING NEXT

July 22-Aug. 13
NAA Teachers Show
Work by instructors for the NAA's classes and camps
 Juror: Dragonfly Leathrum-Simons
 Opening reception:
 Fri., July 22, 7-9 p.m.

Sept. 9-Oct. 8
"Bits and Pieces"
Juried collage and assemblage show
 Featured artists: Rowena Macleod and Dianne Goodell
 Opening reception:
 Fri., Sept. 9, 7-9 p.m.



100 Elkton Road

| | |
|------------|----------------|
| Tues.-Fri. | 11 a.m.-7 p.m. |
| Sat. | 11 a.m.-5 p.m. |
| Sun. | noon-4 p.m. |

Closed Mondays

NAA events Continued from page 1

NHS, for "Sycamore on 57 West Park"; **Maggie Huckleberry**, Newark High School, for "Lovers"; **Jan Dickey**, Cab Calloway School, for "Curtains, Absolutely, Curtains"; **Jack Kubizne**, NHS, for "Red Cup"; **Adrian Poole**, Cab Calloway, for "Bad Taste"; **Colleen Poynton**, NHS, for an untitled work; and **Dylan Chapp**, NHS, for "Nightmare." Also exhibiting were **Asudeh Green**, Newark Charter School, and **Christian Lyu, Brenna Crowther, and Melissa Day**, NHS. Prizes were donated by ZZ House Design, Lieberman's Bookstore, Finely's Art Shoppe, and You've Been Framed.

Auction wrap-up

It takes a lot of people power to make this event happen, from decorating the room and arranging the auction items, to taking the payments, to packing up at the end of the evening. Thanks go out to:

- the auction committee and the merchant basket team: **Carol Boncelet, Susan Logan, Terry Foreman, Barbara Hughes, Catriona Binder-Macleod, Susan Moore, Terri Gillespie, Judith McDonald, and Nicole Royer**;
- "milkmaids" **Brenna Crowther and Kathryn Deplessis** and "milkman" **Justyn Ollivere**, who carried the live auction items around and displayed them to the bidders;
- the set-up and clean-up team: **Caroline Zeitler, Monica Burke, Agnes Morris, Ginger and Mike Burwell**, as well as several volunteers already mentioned;
- the artists, merchants, and patrons for contributing artwork, goods and services, and financial support; and
- auctioneer **Clarence "CJ" Joseph** and guest artist **Larry Anderson**.

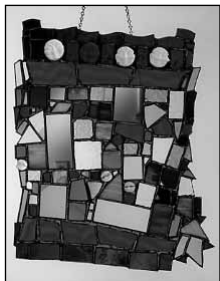
The auction got extensive media attention this year. Advance coverage included articles – complete with color photos of our "got art" guy, Robert Dodge – in both *Delaware Today* and *Out & About*. *The Newark Post* sent a reporter and photographer to the event, and the follow-up article was published on the front page.

Both attendance and proceeds were down a bit over last year. In discussion at the Advisory Committee meeting, the members agreed that this fund-raiser may have run its course, particularly weighing the effort required to carry out the event against the profit margin. New ideas are under consideration for an event that will promote the arts in Newark, community, and fun.

DEADLINE DEADLINE DEADLINE DEADLINE
 The deadline for the July/August issue of ArtForms is June 15.

Great gifts at the NAA Gallery Shop

Jewelry, wearable art, CDs,



ceramics, poetry, paintings, photos, funky furniture, and much more – created by our members.



NAA Summer Classes

The NAA is taking a new approach to its classes, offering a limited schedule of kids' camps and adult classes over the summer. The camps are three hours per day, morning or afternoon.

For details on times, pricing, and instructors, a downloadable class flier is available on the NAA Web site at www.newarkartsalliance.org. Just click on "Classes/Programs." You can also call 302-266-7266 to request a flier or stop by the NAA.

CLASSES FOR KIDS & TEENS

Tick Tock, an Artsy Clock and Whirlygig

Ages 9-12, July 11-15

Paper Players: Collage, Painting and More

Ages 6-8, July 11-15

Art Around the World

Ages 6-8, July 18-22

Surreal Art Camp

Ages 13-17, July 18-22

Little Crafters –

Mini Camp

Ages 4-5, July 25-27

Mystical Mixed Media

– Mini Camp

Ages 6-8, July 27-29

Paper Explorers: Decorating and Sculpting With Paper

Ages 9-12, Aug. 1-5

Junior Paper Explorers

Ages 6-8, Aug. 8-12



Intro to Photography

Ages 13-17, Aug. 8-12

Theater Camp

Ages 9-14, Aug. 15-19

Jewelry and the Boxes That Hold 'Em

Ages 9-12, Aug. 15-19

CLASSES FOR AGE 14-ADULT

Intro to Mosaics

4 Thursdays, June 3-24

Intro to Painted Furniture

4 Thursdays, July 7-28

Old New Castle Photo and Walking Tour

Sun., Aug. 7 – photo shoot in Old New Castle

Thurs., Aug. 11 – sharing the results at the NAA

Not an NAA member yet? Join when you register and get the special price! And please register ASAP. The sooner you do, the sooner we can confirm your class (and avoid cancellations).

Arts Advertisements

Village Imports

All handmade, all fair trade



Summer clothes, garden goodies, and unique gifts for any occasion.

Always something new!

165 E. Main St., Newark

302-368-9923

www.villageimports.com

Scholarships for NAA art classes

Young artists from low- to moderate-income families can get a discount of 50%, 70%, or 90% on the fee for an NAA art class or camp. Funds to support this program were contributed by the Wilmington Flower Market.

The income ranges for the 50% discount are:

Family of 2, \$30,351-\$45,200

Family of 3, \$34,151-\$50,850

Family of 4, \$37,951-\$56,500

Family of 5, \$41,001-\$58,750

For other income guidelines and an application form, call the NAA at 302-266-7266. The discount offer is limited to one student per family per year. Proof of income must be provided.

And now for something musically different!

Swing SAMBA SOUL

Tunes with sass & class - '20s to today

302-731-5013 or swingsambasoul@gmail.com

Interesting work! No pay!

You – yes, YOU – can be an NAA gallery monitor. Beautiful surroundings, flex time, interesting people – and no pesky paycheck to cash. Training provided!

- Greet visitors & answer the phone
- Spread the word about NAA activities, classes, and events
- Sell artwork
- Handle office tasks

What's your schedule? We have two- and four-hour shifts available days and evenings, Tuesday-Sunday.

Provide an invaluable service to community arts! Call the NAA at 302-266-7266 TODAY!

NAA: DEVELOPING COMMUNITY THROUGH THE ARTS

Where to Catch Their Work

Photographer **Heather Siple** is showing selections from her "Dream Garden" series at the North Wilmington Library through the end of August. This collection of images, which depicts the mystical, magical qualities of the natural world includes her bold, black-and-white abstracts and, for the first time, several color photos with the same thought-provoking qualities characteristic of her style. To see Siple's work online, go to www.sipleart.com.



"Amaryllis Reaching" by Heather Siple

Julie Shiel of North East, MD, who writes "dark, chilly delights" genre poetry, has published her second poetry chapbook. Titled "PsychoEntropy," the book is illustrated by Teri Sanitoro and Marcia Borrell. Shiel's work has appeared in more than 100 publications, including *Brutarian*, *Flesh and Blood*, and *Twilight Times*.

Call to Artists Continued from page 11

to the \$50 solo show fee if the proposal is accepted.

Newark Art Loop. Interested in exhibiting your work on the Newark Art Loop? The loop, sponsored by the NAA, is held on a monthly basis at several locations on and near Main Street, including Studio 91, Adria Café, You've Been Framed, The Copy Maven, Main Street Florist, Hardcastle Gallery, Hyacinths & Dragonflies, Sinclair's Café, Brewed Awakenings, and Caffé Gelato. The spaces will accommodate approximately 12 pieces. Contact Pamela Skwish at 302-731-9289 or Dragonfly Leathrum-Simons at 302-266-0664 for details.

OTHER ARTS OPPORTUNITIES

The Delaware Division of the Arts has released updated guidelines and application materials for all of its grant programs. The information is available on the DDOA Web site at www.artsdel.org/grants. The deadline for Individual Artist Fellowships is August 15. DDOA staff members are available to answer questions and assist in the application process. Appointments may be scheduled by calling 302-577-8278.

What's Up With the NAA

Class-y ... yet flexible. The NAA's new approach to classes for this fall is designed to give people a chance to try their hand at more types of art – with less commitment. A series of once-a-week workshops, probably on Thursday evenings, is planned, each running for two to four weeks. Watch this space for further developments! Interested in teaching? Contact the NAA at 302-266-7266.

NAA Gallery Shop news. Items from the Gallery Shop are on display in the case at the Newark Library. Proceeds from the shop are averaging about \$600 per month, and we're paying out about \$175 per month in artist's commissions. The opportunity to submit your work for the shop is one of the benefits of NAA membership. See p. 6 for details.

Board news. **Gordon Hetherston** has joined the NAA Board of Directors.

Thanks from the bottom of our arts!

- To **Barbara Wood** for fixing the flag that hangs on the NAA porch.
- To **Nancy Breslin** for stepping in at the last minute and offering to monitor the day of the auction when we thought we'd be closed.
- To **Jeff Smith** for supplying, setting up, and running a slide projector for Lisa Bartolozzi's talk at "Future Famous Fine Artists" show opening.
- To **Charles Rowe** for serving as our interim Webmaster.

NAA Web site. The NAA site has been redesigned and is in the process of being posted. We're working with Matthew Loeb of Catalyst Visuals in Wilmington.

The site makes use of the purple and green color scheme that was introduced when our new logo was created. A "slide show" of NAA events, classes, and activities appears on each page, and we plan to add more photos throughout the site. In its comments on our grant application, the Delaware Division of the Arts has recommended upgrading the site, particularly in regard to photos.

We're also adding new features. You can download the summer classes flier, and we also plan to provide the newsletter as a PDF.

Several of the new pages are up, and are being reviewed by the Web Team (Susan Logan, Terry Foreman, and Terri Gillespie). Check it out as we fine tune and get the full site up and running.

NAA Painting Group. The painters will continue to meet through the summer on the second and fourth Wednesdays of each month, from 9:30 a.m.-noon. New members are always welcome. Since some sessions will be

Continued on p. 10

Dance teacher(s) wanted!

Hip-hop or creative dance teachers are needed for three classes at the NAA's Camp Imagine this summer. One person could take all three slots, or they could be split.

The sessions run for two weeks, July 18-29, from Monday-Friday. Each hour-long class has 12 students. The pay is \$20 per hour, or \$200 for each session.

The class schedule is:

- Ages 9-10 - 10:15-11:15 a.m.
- Ages 11-13 - 1:30-2:30 p.m.
- Ages 7-8 - 2:30-3:30 p.m.

To apply, contact Terry Foreman at terryforeman58@comcast.net or 302-731-5801.

NAA members: Get your work in the Gallery Shop!

The opportunity to show and sell work in the Gallery Shop at the Newark Arts Alliance building is one of the benefits of NAA membership.

All types of artwork are welcome: paintings, pottery, cards and postcards, jewelry, sculpture - and much more. The committee is particularly interested in expanding the collection of music, literature (novels, poetry, chapbooks, cartoon anthologies, etc.), and films for sale in the shop.

Items can be dropped off at any time during regular hours. Submissions are juried by the Gallery Shop Committee during the fourth week of each month. Accepted work will be displayed for one to three months.

The jury criteria are: originality (no kits or copies); well-crafted, skillful execution; and professional presentation. All 2-D work must be framed with picture wire for hanging, or mounted, matted, and covered with acetate.

All work must be for sale. The commission to the NAA is 30% for non-working members and 20% for working members (at least four volunteer hours per month).

11 great ways to support the NAA!

No. 8 - Take an NAA art class ... and bring a friend!

OPPORTUNITIES WITH THE NAA

Upcoming shows in the Main Gallery

"Through the Artist's Eye"

NAA Members Open Show

Exhibit dates: June 17-July 16

Drop off: Sun., June 12, noon-4 p.m.

Opening reception: Fri., June 17, 7-9 p.m.

Pick up: Sun., July 17, noon-4 p.m.

"Bits and Pieces"

Juried collage and assemblage show

Featured artists: Rowena Macleod and Dianne Goodell

Drop off: Sun., Sept. 4, noon-4 p.m.

Opening reception: Fri., Sept. 9, 7-9 p.m.

Through Sat., Oct. 8

Pick up: Sun., Oct. 9, noon-4 p.m.

NAA EXHIBIT GUIDELINES

Artists may submit up to three pieces for each show. The hanging fee is \$5 per artwork. This fee supports promotional and other costs associated with the exhibit. If the fee prohibits you from participating, please write to the Main Gallery Committee and request a waiver.

On each submission, please include a label with your name, the title of the work, the medium (acrylic, raku, computer scan, etc.), your phone number and e-mail address, and a selling price, if applicable. (Work may be marked NFS.)

Commission on sales to the NAA is 20% for working members (at least four volunteer hours per month), 30% for non-working members, and 40% for non-members.

All 2-D work must have a hanging wire on the back and must be framed in keeping with professional standards (no dirty mats, damaged glass, chipped frames, etc.).

Main Gallery proposals due Oct. 1. In addition to the open and group exhibits, the NAA's Main Gallery also accepts proposals for individual, group, and curated shows. Submissions, with 10-15 slides that represent the work to be included, will be accepted through Sat., Oct. 1, for the 2006 season. The jury fee, \$15 for members and \$25 for non-members, is applied

Continued on page 12

What's Up With the NAA Continued from page 5

held outdoors, please call Pamela Skwish at 302-731-9289 to check on the location for each session.

Get in the loop. The NAA's monthly Art Loop turns businesses on and around Main Street into mini-galleries. For details on artists and locations, see the insert in this newsletter or visit the NAA Web site (www.newarkartsalliance.org).

NAA Book Club. "Reading the lines ... and what's between them" is the motto of this monthly book club, open to NAA members, which meets the second Monday of each month, 7-8:30 p.m., at the NAA. The annual membership fee is \$30 for individuals, \$50 for couples and families.

Books up for discussion are:

June 13 – "Hitchhiker's Guide to the Galaxy"

July 11 – "She's Come Undone"

August – local author, TBA

For more information, contact coordinator Beverly Wilkinson at 302-983-4310 or naabookclub@gmail.com. There's also an online community at www.livejournal.com/community/naabookclub.

Word Dancing: The Poetry Scene. The poets meet Tuesdays from 8-10 p.m. at the NAA. There's a \$2 cover. These sessions are suggested for age 15 and up due to occasional language and adult topics.

Here's the schedule:

June 7 – Open reading

June 14 – Feature: Zork of White Plains, NY

June 21 – Open reading

June 28 – National Poetry Slam Team finals

July 5 – Open reading

July 12 – Feature: Brian Smith of Toms River, NJ, plus open mic

July 19 – Open reading

July 26 – Open slam & open mic

Check the Web site at www.worddancing.com for current information.

E-mails about the poetry group are being sent to NAA members. Bring the e-mail to a slam and get in free.

Newark Nite. Youngsters armed with different-colored markers gathered around the NAA booth to create "Arty Town" during the city's annual summer kick-off celebration on June 4. Kids 9 and under were able to walk around and through the cardboard city, creating as they went. Children also were able to make their own "arty magnets," coloring in the drawings, which were then sealed in plastic.

Spotlight on Community Arts

The Delaware Art Museum reopens with a free Family Day & Open House on Sun., June 26, from noon-4 p.m. The newly renovated museum features new galleries, Delaware's first sculpture park, a café and outdoor terrace, and a museum store. The museum is located at 2301 Kentmere Parkway, Wilmington. Info: 302-571-9590 or www.delart.org.

Liberty Day. The Newark community's annual July 4 celebration runs from 4-9 p.m. at the University of Delaware Athletic Complex on South College Avenue. The event includes music, food, and a fireworks finale.

Food & Brew Fest. The brewer's art and the culinary arts combine for downtown Newark's second annual Food & Brew Fest, set for Sat., July 23, starting at noon. Nine or more restaurants will pair with American craft breweries to offer specials in celebration of American Beer Month. The event also includes a "Hops & Shops" sidewalk sale. The event is sponsored by the Downtown Newark Partnership and *Out & About*.

Private art lessons available. Dragonfly Leathrum specializes in portfolio preparation for the Cab Calloway School and art colleges. Art lessons are also available in drawing, painting, and stained glass, ages 10-adult. References are available. Classes are held at Studio 91 in Newark. Contact the instructor at dragonfly@leathrum.com.



The Song
Phoebe Anna
Traquair

ADVERTISE IN ARTFORMS

- Your ad reaches readers who love the arts, both in print (about 750 circulation) and on the NAA Web site (www.newarkartsalliance.org) for the same low price!
 - 2-1/4" block-\$20 each or \$70 for four insertions
 - 2-1/4" x 4-1/2" (vertical or horizontal)-\$40 each or \$140 for four insertions
 - Ads do not have to run in consecutive issues to get the multiple-insertion rate
 - Camera-ready, or we design - no charge
- Contact Terri Gillespie,
302-456-1372 or
swingsambasoul@gmail.com.

WITH THE NAA

At the NAA unless otherwise listed

"Future Famous Fine Artists"

Exhibit of work by artists age 14-18
Through June 11

"Through the Artist's Eye"

NAA Members Open Show

Reception: Fri., June 17 @ 7-9 p.m.
Through July 16

NAA Book Group

2nd Mon. @ 7-8:30 p.m.

Info: Beverly Wilkinson, 302-983-4310 or naabookclub@gmail.com

NAA Gallery Shop Committee

4th Wed. @ 7 p.m.

Info: Doris Crowley, 302-368-7172

NAA Main Gallery Committee

1st Mon. @ 7 p.m.

Info: Maureen Kamerick,
302-453-8866

NAA ART GROUPS

At the NAA unless otherwise listed

NAA Painting Group

Bring your own supplies

2nd & 4th Wed. @ 9:30 a.m.-noon

Info: Pamela Skwish, 302-731-9289

Loose Threads – Artists Group

Fiber arts, painting, jewelry & more
3rd Wed. @ 7 p.m.

Info: Laura Spencer, 302-453-1351

NAA Board of Directors

Call for date & location

NAA Advisory Committee

2nd Wed. @ 6 p.m.

Worddancing: Poetry Reading, Open Mic & Slam

Tues. @ 8-10 p.m. – \$2 cover
Suggested for age 15 & up due to occasional language & topics
Contact: Beverly Wilkinson at
worddancingpoetry@aol.com or
302-983-4310

NEWARK ART SCENE

Chapel Street Players

"Meshuggah Nuns"

June 3, 4, 10, 11, 12, 17, 18 @ 8 p.m.

Chapel Street Playhouse

Info & tickets: 302-368-2248 or
www.chapelstreetplayers.org

Newark Free Library

1) Chess Night

Tues. @ 6:30-8:30 p.m.

2) Brown Bag Book Discussion Group

Tues. June 14, July 12, Aug. 9 @
12:15 p.m.

3) Delaware Classical Showcase

All concerts 7 p.m.

- Wed., June 15 – Genia & Liliya Maslov, violin & piano

- Tues., July 19 – Victoria Clark, bassoon & Adrienne Harding, flute

- Tues., Aug. 16 – Jennifer Page, soprano, accompanied by Lotus Cheng Brown

4) Friday Independent Film Series

All films 7 p.m.

- July 8 – "Raja"

- Aug. 12 – "Hop"

5) Teen Program Nights

Wed. @ 7 p.m. for age 12 and up,
registration required

- June 22 – Learn how comics are made with John Gallagher, artist for "Buzzboy"

- June 29 – "It's Not Fantasy, It's for Real," Julie Willey, Delaware State Police Crime Lab Director, talks about careers in forensics

- July 13 – Comic Book Trivia game
- Aug. 3 – Writing workshop with Lara Zeises on "flash fiction," the short-short story

- Aug. 10 – "It's Not Fantasy, It's for Real – Is It Blood?" Blood detection with Julie Willey, Delaware State Police Crime Lab Director

6) Story Times

All ages, toddler & bilingual

Call the library at 302-731-7550 for details

Newark International Folkdancers

No partner necessary

Fri. @ 8 p.m.

George Wilson Community Center

Info: 302/737-7321 or

ismat@udel.edu

Newark Open Bluegrass/

Oldtime Jam

Any skill level, bring instrument

Thurs. @ 7:30-10 p.m.

St. Thomas Episcopal Church

Scottish Country Dancing

No charge, no partner necessary

Mondays @ 7:30 p.m.

St. Thomas Episcopal Church

Info: 302-368-2381

ARTS IN THE AREA

All Delaware unless otherwise listed

Contemporary Stage Company

1) "Restoring the Sun"

June 1-12; Wed. & Thurs., 7 p.m.;
Fri., 8 p.m., Sat., 2 & 8 p.m., Sun.,
2 p.m.

2) "30 Plays in 60 Minutes" (or: Too Much Light Makes the Baby Go Blind"

June 17-26; Fri. & Sat., 7 & 9 p.m.,
Sun., 2 p.m.

3) "The Fourposter"

July 6-17; Wed. & Thurs., 7 p.m.;
Fri., 8 p.m., Sat., 2 & 8 p.m., Sun.,
2 p.m.

Baby Grand, Wilmington

Info & tickets: 302-652-5577 or
www.grandopera.org

Delaware Accordion Club Open Mic

3rd Sun., 2-5 p.m.

Bear Diner, Bear

Info: 302-738-7378

Delaware Art Museum

Free Family Day & Open House

Sun., June 26 @ noon-4 p.m.

Wilmington

Quilts for Comfort

2nd Wed. @ 7 p.m.

Delaware City

Saturday Quilt Bees • 9 a.m.-4 p.m.

Dates, locations & info:

www.quiltsforcomfort.com