

NONPROFIT
ORG
U.S. POSTAGE
PAID
NEWARK, DE
PERMIT NO. 2

Mark Your Calendar
NAA SUMMER CAMPS SHOW – AUG. 18
"ALL FIRED UP" EXHIBIT OPENING – SEPT. 8



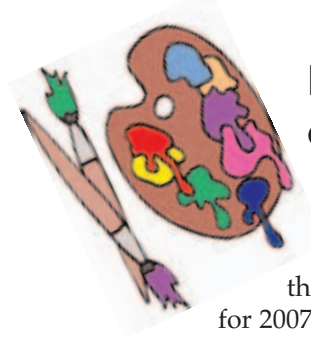
"DEVELOPING
COMMUNITY
THROUGH
THE ARTS"

100 ELKTON ROAD
NEWARK, DE 19711



ARTFORMS

AUGUST/SEPTEMBER 2006



DDOA recognizes NAA for community-focused programs

The Delaware Division of the Arts has once again recognized the Newark Arts Alliance for meeting its mission of "developing community through the arts" by awarding us a generous grant for 2007.

We received \$13,300 in general operating support, the maximum for our budget level, and \$10,000 for public impact. The NAA was one of only nine organizations awarded the latter grant, which required a separate application.

The grant panel recognized the NAA in particular for:

- the Art to Go concept and bringing this program into the community,
- the support the NAA gives to education activities and our efforts to bring in children,
- the extent to which we subsidize students to make it financially feasible for them to participate, and
- our unique partnerships and collaborations with community groups and such organizations as the Newark Police Department. (The NAA is working with the police on murals designed to eliminate graffiti at the Casho Mill Road railroad underpass.)



"The public impact portion of the grant is a significant reward for our work in reaching diverse audiences through programs such as Art to Go, Camp Imagine, and our scholarship program," explains Terry Foreman, grants coordinator for the NAA.

"We continue to investigate new funding

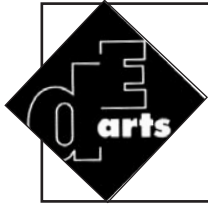
Continued on page 3

Contact us

NEWARK ARTS ALLIANCE • 100 ELKTON ROAD • NEWARK, DE 19711
302-266-7266 • WWW.NEWARKARTSALLIANCE.ORG



The Newark Arts Alliance is a locally supported cultural non-profit organization. Our mission is to provide the citizens of greater Newark with the opportunity to explore and display their creativity, as well as participate in cultural events that build community. We provide the means to celebrate life through all forms of artistic diversity.



The NAA's programs are made possible, in part, by grants from the National Endowment for the Arts and the Delaware Division of the Arts, a state agency committed to promoting and supporting the arts in Delaware. The Delaware Division of the Arts provides technical and financial assistance to artists and arts programs and serves as a clearinghouse for information on the arts.

NEWARK ARTS ALLIANCE
LOCATION: THE GRAINERY STATION, 100 ELKTON ROAD
SUMMER HOURS: TUES-FRI 12-7 · SAT & SUN 12-3 · CLOSED MON
PHONE: 302-266-7266
E-MAIL: INFO@NEWARKARTSALLIANCE.ORG
WEB SITE: WWW.NEWARKARTSALLIANCE.ORG

NAA Advisory Committee

- SUSAN LOGAN administrative director
- TERRY FOREMAN program director, grant writing 302-731-5801
- DRAGONFLY LEATHRUM murals
- JEFF SMITH gallery shop
- TERRI GILLESPIE public relations director/ArtForms editor 302-456-1372
- MAUREEN KAMERICK main gallery committee
- BEVERLY WILKINSON poetry readings

Project Coordinators

- MATTHEW LOEB webmaster
- PAMELA SKWISH art loop 302-731-9289
- VALERIE PRINCE ArtForms layout & design

Board of Directors

- | | |
|-------------------------------|-------------------|
| RAY MAGNANI president | GORDON HETHERSTON |
| PAUL SCHLOSSER, JR. treasurer | MICHELE C. MCCANN |
| BARBARA FRENCH secretary | TODD MOTTO |
| CAROL BONCELET | LAURA WAY |
| MELISSA COX | |

Thanks for supporting the arts!

RECENT NEW & RENEWING MEMBERS

Renewing Members

Lavinia Arshid
 Heather Siple
 Carla & Don Koss
 Phyllis Tribull

Joy Davis
 Caroline Golt
 Susan Logan

New Members

Joe Kerezsi
 Erin Gordon
 Bill Naylor
 Russ Dynes & Jane Luke

“Deliver me from writers who say the way they live doesn’t matter. I’m not sure a bad person can write a good book. If art doesn’t make us better, than what on Earth is it for?”

– Alice Walker

NEWARK ARTS ALLIANCE MEMBERSHIP FORM

NAME: _____

ADDRESS: _____

CITY, STATE, ZIP: _____

PHONE: _____ E-MAIL: _____

EMPLOYMENT: _____

PLEASE SEND ME INFORMATION ABOUT VOLUNTEER OPPORTUNITIES

ANNUAL MEMBERSHIP OPTIONS

\$20-STUDENT \$30-INDIVIDUAL \$50-FAMILY \$100-ORGANIZATION

PREMIUM MEMBERSHIPS – INDIVIDUAL OR FAMILY

\$50 TO \$99-FRIEND \$100 TO \$249-PATRON
 \$250 TO \$499-BENEFACTOR \$500 & UP-PICASSO CLUB

MAKE CHECK PAYABLE TO:

NEWARK ARTS ALLIANCE
 100 ELKTON ROAD, NEWARK, DE 19711

FOR OFFICE USE
CK _____
DATE _____
AMT _____

through the binder and connect with NAA artists. Each artist is limited to two 8.5x11-inch pages. The information must be professionally presented. Artists are encouraged to donate a commission to the NAA if they get work through the book.

Artful birthday parties at the NAA. You can celebrate a youngster's special day with an art-oriented party at the Newark Arts Alliance. You get exclusive use of the classroom for 2.5 hours (\$75), an art instructor for a one-hour project (\$40), and art supplies (\$3 per child). Choose from a variety of projects. A party attendant is also available for \$25, but is not required if the parent assists. To check the schedule and for details, call the NAA at 302-266-7266.

11 great ways to support the NAA!

No. 5 - Volunteer!

(Jobs of all sizes available ...)

NAA members: Get your work in the Gallery Shop!

The opportunity to show and sell work in the Gallery Shop at the Newark Arts Alliance is one of the benefits of NAA membership.

All types of artwork are welcome: paintings, pottery, cards and postcards, jewelry, sculpture – and much more. The committee is particularly interested in expanding the collection of music, literature (novels, poetry, chapbooks, cartoon anthologies, etc.), and films for sale in the shop.

Items can be dropped off at any time during regular hours. Submissions are juried by the Gallery Shop Committee during the fourth week of each month. Accepted work will be displayed for one to three months.

The jury criteria are: originality (no kits or copies); well-crafted, skillful execution; and professional presentation. All 2-D work must be framed with picture wire for hanging, or mounted, matted, and covered with acetate.

All work must be for sale. The commission to the NAA is 30% for non-working members and 20% for working members (at least four hours per month).

sources, and we're particularly interested to learn of grants available through NAA members' workplaces," Foreman adds. "Often corporate funders wish to see their employees involved in the nonprofit before they consider contributing. As a volunteer, you can improve our success in getting grants!"

The financial picture

Grants are an important piece of the financial picture for a nonprofit organization, and the general operating support from the DDOA is particularly welcome. Many of the grants we receive are project-based, which is wonderful in helping us expand our offerings. However, they don't cover our day-to-day expenses.

The basic cost for keeping the NAA's doors open averages out to about \$6,000 per month. That's rent, utilities, salaries (29 hours per week), supplies, Web site, printing and postage, and much more. Many of our programs break even financially. The income from memberships, Gallery Shop sales, exhibit commissions and hanging fees, and class fees doesn't cover our operating expenses.

That's where general operating grants, donations to the annual campaign, and countless volunteer hours come in, providing the additional fuel to keep us going. So thanks to the DDOA and to all of you who keep the NAA alive and artful.

NAA Exhibition Gallery Guidelines

For juried shows, artists may submit up to three pieces. The submission fee is \$5 per artwork. This charge supports promotional and other costs associated with the exhibit. If the fee prohibits you from participating, please write to the Main Gallery Committee and request a waiver.

Please include label on each entry with your name, the title of the work, the medium (acrylic, raku, computer scan, etc.), your phone number and e-mail address, and a selling price, if applicable. (Work may be marked NFS.)

Commission on sales to the NAA is 20% for working members (at least four volunteer hours per month), 30% for non-working members, and 40% for non-members.

All 2-D work must have a hanging wire on the back and must be framed in keeping with professional standards (no dirty mats, damaged glass, chipped frames, etc.).

Artful space for rent!

Looking for an artful, convenient, cozy spot for your business meeting, wedding or baby shower, anniversary dinner, performance, small-hall concert, children's birthday party, or other event? Check out the Newark Arts Alliance at 100 Elkton Road.

The site is available all day Monday, when the NAA is closed, and at other times depending on space needs and type of activity. We'll do our best to accommodate you. Contact Administrative Director Susan Logan at 302-266-7266 or www.newarkartsalliance.org about availability.

For most activities, the fee for each three-hour period (all or a portion) is \$50 on weekdays, \$75 on Friday, Saturday, and Sunday. That fee provides use of the building (Main Gallery, Gallery Shop, classroom, kitchen, restrooms, tables and chairs), a volunteer to open and close the building, and free parking in the adjacent lot.

A \$100 deposit (in the form of a personal check) is required. It will not be cashed except to cover cleaning costs or damage to the building or contents.

Children's parties in the classroom are \$75 for up to 2.5 hours, and can include art instruction and supplies.

See the "Policies" section on the NAA Web for all the details.

Great gifts at the NAA Gallery Shop



*Jewelry, poetry,
ceramics, CDs, photos,
paintings, funky
furniture, scarves,
and much more –
created by our members*



**THE NAA: EXHIBITS · GIFT SHOP · EVENTS
ART CLASSES & CAMPS · MURALS**

Poets take it on the road. The Word Dancing poetry group's team is headed for Austin, TX, to represent Delaware in the 2006 National Poetry Slam. The dates are Aug. 9-13. Congratulations to Matt McDonald, J.P.J.



Pelletier, and Hannah Renk for racking up the points and earning a spot on the team!

Slammaster Beverly Wilkinson is coaching the team members to make sure their A-game is ready for slam poetry's answer to the Super Bowl, Team Delaware will be competing with nearly 80 other teams from across the country.

Word Dancing holds a poetry event every Tuesday from 8-10 p.m. at the NAA. There is a \$3 cover, and the sessions are suggested for age 15 and up due to occasional subject matter and language.

Upcoming events include:

- Sept. 19 – Feature: Jaimer Kilstein from New York City, the 2006 Urbana Grand Slam Champion
- Sept. 26 – Open Slam
- Oct. 10 – Feature: Andrea Gibson from Denver, CO, IWSPS third-place winner

Suds & sounds. "Hop to It," our summer beer-tasting and blues event, brought in nearly \$700 profit.

Shorter summer hours. Through August, the hours at the NAA are Tuesday-Friday, noon-7 p.m., and Saturday and Sunday, noon-3 p.m. This is both a cost-saving measure and a recognition of the fact that it's much more difficult to find volunteer monitors during the summer months.

More artwork for the Gallery Shop, please! Jewelry, cards, and unframed are particularly popular. Do you know artists whose work would sell well? Encourage them to join the NAA and submit their work for the shop. See page 14 for details on commission and work rotation. The policy is also on the NAA Web site.

Interested in commissions? The NAA has a new membership benefit just for you. Artists can submit a two-page sample of their work to be exhibited in an artist registry portfolio binder at the NAA. Visitors interested in finding, for example, a muralist, jewelry maker, poet, or musician, can flip

Continued on page 14

WITH THE NAA

NAA Art Loop. Interested in exhibiting your work on the Newark Art Loop? The loop, sponsored by the NAA, is held on a monthly basis at several locations on and near Main Street, including Studio 91, Adria Café, You've Been Framed, Main Street Florist, Hardcastle Gallery, Hyacinths & Dragonflies, Sinclair's Café, Brewed Awakenings, and Caffé Gelato. The spaces will accommodate approximately 12 pieces. Contact Pamela Skwish at 302-731-9289 or Dragonfly Leathrum at 302-266-0664 for details.

OTHER ARTS OPPORTUNITIES

Sing with the Delaware Valley Chorale! Musicians from the greater Wilmington area are invited to audition for the area's premiere symphonic chorus on Mon. and Tues., Aug. 28 and 29, and Fri., Sept. 8.

Auditions are by appointment only at The Episcopal Church of Saints Andrew and Matthew at 719 North Shipley Street, Wilmington. The Delaware Valley Chorale welcomes singers of all ages and cultural backgrounds to audition. To schedule a time, please contact Barbara Kidd at 302-234-4866 or BMKSop@aol.com.

Singers are asked to prepare a short vocal solo with piano accompaniment and the choral part of "And the Glory" from Handel's "Messiah." They will also be asked to demonstrate sight reading ability.

David Christopher is the Artistic Director and Conductor for the chorale. The 2006-07 season will include a performance of "The Messiah" in December. Concerts will also feature works by Randall Thompson, Benjamin Britten, Maurice Durufle, and William Copper.

For additional information, please visit www.delawarevalleychorale.org.

ADVERTISE IN ARTFORMS

- Your ad reaches readers who love the arts, both in print (about 750 circulation) and on the NAA Web site (www.newarkartsalliance.org) for the same low price!
 - 2-1/4" block—\$20 each or \$70 for four insertions
 - 2-1/4" x 4-1/2" (vertical or horizontal)—\$40 each or \$140 for four insertions
 - Ads do not have to run in consecutive issues to get the multiple-insertion rate
 - Camera-ready, or we design – no charge
- Contact Terri Gillespie,
302-456-1372 or
swingsambasoul@gmail.com.

Karoline Wileczek, a Delaware based artist, is exhibiting a 15-year survey of her paintings this fall in Milton, DE. This milestone exhibition will include large-scale as well as intimate-size paintings done in oils, acrylics, encaustics, pastels, and inks.

"Invents and Outtakes," her first survey exhibit, will be shown Sept. 23-Oct. 28 at the 205 Lavinia Street Gallery. The opening reception is Sat., Sept. 23, from 5-7 p.m.

The artist says the show "characterize[s] a potent and unique sensibility and demonstrate[s] an evolutionary journey through color and content."

Highlights from her jar series, mushroom series, Jackie and the Beanstalk series, and early detective paintings will be showcased. A CD and print catalog with essays will accompany the show.

Wileczek has exhibited in Minneapolis, Philadelphia, New York, and Delaware in art centers, galleries, and museums. She received her BFA from Tyler School of Art and her MFA from the University of Minnesota. She was a Delaware Division of the Arts Fellow in 2002.

Wileczek welcomes the opportunity to speak about her work. Contact her at Wileczek@aol.com. For more information, visit www.205lavinia.com



Nancy Breslin's pinhole photographs are part of a summer group show at Gallery Imperato in Baltimore through Aug. 19. Gallery Imperato is located at 921 E. Fort Avenue (Suite 120). Info: www.galleryimperato.com

An exhibit by **Pamela Skwish** titled "Rhythmic Energy" will be displayed at You've Been Framed, 173 E. Main St., Newark, in September. The opening reception is Fri., Sept. 8, from 5-8 p.m. The exhibit features encaustic melted wax, watercolors, monoprints, and collage.

Oil still life and portraiture by **Neilson Carlin** will be featured at Brush and Palette at the Art Stroll on Fri., Sept. 1, in Kennett Square, PA. The reception is from 6-9 p.m. The exhibit runs through Sept. 23. Info: 610-444-4565 or www.brushandpalette.net

Where can people catch your work?

E-mail info about your exhibits, projects, and other arts activities to info@newarkartsalliance.org. The deadline is the 15th of each month for the following month's issue.

Get your artwork in the Gala!

A live and silent auction will be part of "The Four Seasons Gala," the first event sponsored by Mosaic, a partnership of the Newark Arts Alliance, the Newark Symphony, and Mid-Atlantic Ballet. Our goal is to collaborate on special events and programs to succeed in our common mission of contributing to a vibrant cultural life in Newark.

The gala will be held Sat., Nov. 4, from 7-10 p.m. at the University of Delaware's Trabant Center in Newark. The three arts organizations will share the proceeds equally from this event.

Mosaic is seeking donations of original artwork for the auction. Artwork may be donated outright or submitted for a commission of 50% to the artist. All art contributions will be juried and accepted at the discretion of the gala committee.

Artists are asked to set a minimum bid for each piece of artwork. If the minimum bid is not reached, the artwork will be returned. We would like to suggest that the minimum bid be set at 50% of the value of the piece (which means artists seeking a commission might only get 50% of that amount). We will be looking for art that is appropriately priced and likely to attract bids.

You may submit as many pieces for consideration as you like. Artwork donated at 100% is completely tax deductible. Artwork submitted for a 50% return commission is considered an art sale and is not tax deductible.

Please bring your artwork to the NAA from Oct. 1-14 during regular hours. For more information and submission forms, contact Terry Foreman at 302-731-5801 or at terryforeman58@comcast.net.

The Four Seasons Gala is co-chaired by Newark Mayor Vance Funk and Terri Kelly, CEO and President of W.L. Gore & Associates. In addition to the auction, the event includes a cocktail reception and performances by members of Mid-Atlantic Ballet and the Newark Symphony. Four hundred guests are anticipated to attend.

Tickets will be available in September and can be purchased online. A special Web site – www.newarkartsalliance.org/mosaic.html – has been created for the event. A link is also posted on the NAA site's home page.



OUR CURRENT EXHIBIT

Through Aug. 12

"Art Bytes," an open, juried show of computer-aided art



"Art Bytes," our first-ever show dedicated to computer-assisted artwork, features work by Doris Crowley – the juror for the show and the featured artist, Richard Ortolano, Nancy Breslin, Maureen Kamerick, Bruce Turner, Molly Stanard, Bill Naylor, and Felise Luchansky.

The work includes fractal art, images created on a scanner, photographs manipulated with Photoshop, as well as several fabric pieces. Kamerick has two silk scarves, for which the pattern was guided by a computer connected to her loom.

Breslin has a silk camisole with an

image made with an inkjet printer, and a cyanotype on silk created using a scanned image and inkjet negative.

Stop by and check out how creativity and computers work together!



COMING NEXT

Aug. 18- 26

NAA Summer Camps Show

Opening reception: Fri., Aug. 18 • 7-9 p.m.

Kids have been getting creative all summer long at Camp Imagine and in NAA art classes. This exhibit gives them the opportunity to have their work shown in a gallery setting. It's always a lively and inventive experience.

AND THEN ...

Sept. 8-Oct. 7 "All Fired Up," an exhibit of ceramics by Carole Fox

Oct. 13-Nov. 18: Group figure painting show

Nov. 24-Dec. 30: Holiday Art Market

Wardrobe" – Wed., Aug. 9, "Go, Dog, Go" – Fri., Aug. 11, "E.B. White's Adventures of Stuart Little" – Tues., Aug. 15, and "Cinderella, Cinderella" – Thurs., Aug. 17.

Art Space on Main. Two visiting artist shows are scheduled at this Elkton, MD, gallery: Amedeo Salamoni and Kevin Lehman from Aug. 22-Sept. 16, and Mitch Lyons from Aug. 22-Sept. 9. Info: 410-620-2464 or www.artspaceonmain.com.

Check dates & times,
download back issues ...
www.newarkartsalliance.org

Presenting ...

Delaware by Hand

our first year of gathering
**Delaware Artisans and
Craftsmen** under "one roof."

*We might be small, but we're
growing every day!*



To find out more or become
a member, please visit
www.delawarebyhand.org




Market East Plaza, Main St.
Call us! (302) 368-5894
www.newarknaturalfoods.com



Summer Hours (through August)

Tues.-Fri.	noon-7 p.m.
Sat. & Sun.	noon-3 p.m.
Closed Mondays	
100 Elkton Road	

Spotlight on Community Arts

"Movies That Matter!" The second annual Newark Film Festival lights up the screens at Newark Cinema Center 3 from Thurs., Sept. 7, through Sun., Sept. 10. This year, the festival brings 24 independent and documentary films to town – award-winning movies culled from this year's top national and international film festivals, some of which will be shown for the first time in Delaware.

Live music will also be part of the event this year, with acoustic soloists and small ensembles performing before and after the films.

For a look at the films under consideration (and the chance to vote for the ones you'd like to see), visit www.NewarkFilm.com. The festival is sponsored by HostMySite.com.

Award Winners VI. This show is the sixth annual exhibit at the Biggs Museum of American Art in Dover that commemorates the diversity of Delaware's visual and performing artists.

Every year the Delaware Division of the Arts honors the achievements of select artists with fellowships. The Biggs Museum then invites these Artist Fellows to exhibit and perform their works in the only group showcase of the DDOA winners.

Artist talks will be given Wednesdays, Sept. 6 and Oct. 4, from 5:30-7:30 p.m., and Saturdays, Sept. 23 and Oct. 21, from 2-4 p.m. The fee is \$8, \$5 for members. Reservations and info: 302-674-2111 or www.biggsmuseum.org

Glass blower Deb Appleby is the featured artist for the Delaware by Hand Members Day on Sun., Aug. 27. Her home studio in Lewes, DE, will be open from 2-6 p.m. Members are invited to bring samples of their artwork to share and trade. Pieces can also be photographed professionally for just \$5 per image. DBH is a non-profit organization dedicated to showcasing craftspeople living and working in Delaware. Info: www.delawarebyhand.org

The Summer Children's Theatre at the Grand Opera House is a pay-what-you-can experience. The suggested donation is \$4, or any amount the person can afford, to make it possible for those for all socioeconomic backgrounds to attend.

The series of shows is produced by Contemporary Stage Company and Keith Powell, Producing Artistic Director. All shows are given twice each day, at 10 a.m. and noon, and they're appropriate for all ages. The schedule includes "Sleeping Beauty" – Mon., Aug. 7, "The Lion, the Witch, and the

Continued on page 10

WITH THE NAA

At the NAA unless otherwise listed

"Art Bytes"

Computer-aided art
Through Aug. 12

NAA Summer Camps Show

Opening reception: Fri., Aug. 18
@ 7-9 p.m.; through Aug. 26

NAA ART GROUPS

At the NAA unless otherwise listed

NAA Gallery Shop Committee

4th Wed. @ 7 p.m.

Info: Jeff Smith, 302-368-1089

NAA Main Gallery Committee

1st Mon. @ 5:30 p.m.

Info: Maureen Kamerick,
302-453-8866

NAA Painting Group

Bring your own supplies

1st & 3rd Wed. @ 9:30 a.m.-noon

No meetings in August

Info: Pamela Skwish, 302-731-9289

Loose Threads – Artists Group

Fiber arts, painting, jewelry & more

3rd Wed. @ 7 p.m.

Info: Laura Spencer, 302-453-1351

NAA Board of Directors

Call for date & location

NAA Advisory Committee

2nd Wed. @ 6 p.m.

Word Dancing: Poetry Reading, Open Mic & Slam

Tues. @ 8-10 p.m. – \$3 cover

*Suggested for age 15 & up due to
occasional language & topics*

For details on upcoming events, see
page 13.

NEWARK ART SCENE

Newark International Folkdancers

No partner necessary

Fri. @ 8 p.m.

George Wilson Community Center

Info: 302-737-7321 or Ismat@udel.edu

Newark Free Library

1) Independent Film Series

"Hawaii, Oslo"

Fri., Aug. 4 @ 7 p.m.

2) Delaware Classical Showcase

Jessica Graae, soprano, and Lydia

Hazeltine, piano

Fri., Aug. 18 @ 7 p.m.

Info: 302-731-7550

Newark Open Bluegrass/ Oldtime Jam

Any skill level, bring instrument

Thurs. @ 7:30-10 p.m.

St. Thomas Episcopal Church

St. Thomas Episcopal Church

Scottish Country Dancing

No charge, no partner necessary

Mondays @ 7:30 p.m.

St. Thomas Episcopal Church

Info: 302-368-2318

ARTS IN THE AREA

All Delaware unless otherwise listed

Quilts for Comfort

2nd Wed. @ 7 p.m.

Delaware City

Saturday Quilt Bees • 9 a.m.-4 p.m.

Dates, locations & info:

www.quiltsforcomfort.com

Village Imports

All handmade, all Fair Trade

Stay cool!



Silk gypsy skirts
from India, batik
dresses from Bali,
sleeveless tops from Nepal

165 E. Main St., Newark, DE

302-368-9923

www.villageimports.com

Mon-Tues 10-6, Wed-Sat 10-8, Sun 12-5

"Four Seasons Gala"

Save the date & celebrate the arts

Sat., Nov. 4, 2006

Proceeds benefit:

- Newark Arts Alliance
- Newark Symphony Orchestra
- Mid-Atlantic Ballet

Sponsored by Mosaic:

A Collaboration of Newark Arts

Watch out,
2006 World
Poetry Slam!

Here comes
Word Dancing



from Delaware ...
gettin' their rhyme on
in Austin, TX!

Congratulations &
good luck to the team:
Matt McDonald,
J.P.J. Pelletier, and
Hanna Renk

DEADLINE DEADLINE

The deadline for the September/October issue of ArtForms is August 15.