

NONPROFIT
ORG
U.S. POSTAGE
PAID
NEWARK, DE
PERMIT NO. 2

Mark Your Calendar

APRIL 1 – NAA MEMBERS EXHIBIT OPENS AT
CAFFÉ GELATO
APRIL 6 – NAA/CAFFÉ GELATO WINE DINNER
APRIL 11 – GRAND OPENING AND "IMPRESSIONS
OF NEWARK" EXHIBIT
APRIL 25 – NAA WINE TASTING



"DEVELOPING
COMMUNITY
THROUGH
THE ARTS"

MARKET EAST PLAZA
276 E. MAIN STREET
SUITE 102
NEWARK, DE 19711



ARTFORMS

MARCH-APRIL 2008

The NAA bursts from its cocoon ...

The NAA is racing against time to get our new location all spiffed up for the grand opening on Friday, April 11. The dust and paint brushes are flying in the two spaces at 276 East Main Street.

It's a busy April. In addition to our grand opening with the "Impressions of Newark" art exhibit, there's also Caffé Gelato's NAA member exhibit (April 1-30) and benefit wine dinner (April 6), an NAA wine tasting (April 25), and an array of arty events as part of Newark's 250th anniversary celebration.

Here's what's up for Friday, April 11

We'll literally be rolling out the red carpet

- ▶ 6-9 p.m. – opening reception for the "Impressions of Newark" exhibit
- ▶ 6-7 p.m. – outdoor performance by the Shakin' Sharks Steel Drum Band from Downes Elementary School

- ▶ 8:30 p.m. – Mayor Vance Funk presents a key to the city to the NAA

The evening also includes:

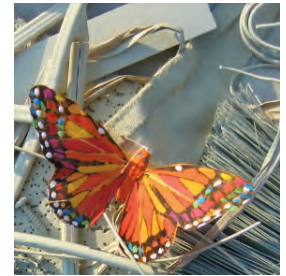
- ▶ the premiere of the "250" collage sculpture
- ▶ music by singer-guitarist Steve Hobson and guitarist Joe Ambrosino
- ▶ performances by belly dancer Ilianna and the Ming Tao Tai Chi Studio
- ▶ an art project for youngsters in our new classroom
- ▶ tricks by strolling magician Tom Way
- ▶ tours, refreshments ... and more

See the articles inside for more on our other April events.

Bring your artwork starting March 21

We'll be accepting work for both art exhibits and the Gallery Shop starting Friday, March 21. The hours are: 12-3 p.m. on Friday, Saturday, Sunday, and Tuesday, and 4-7 p.m. on Wednesday. Work for the grand opening and Gallery Shop will also be accepted April 4-6 from 12-3 p.m.

We're in the strip of shops closest to the East End Café – just behind the defunct computer store and in front of Wang's Oriental Grocery.



Contact us

276 E. MAIN ST., SUITE 102 • NEWARK, DE 19711
302-266-7266 • WWW.NEWARKARTSALLIANCE.ORG



The Newark Arts Alliance is a locally supported cultural non-profit organization. Our mission is to provide the citizens of greater Newark with the opportunity to explore and display their creativity, as well as participate in cultural events that build community. We provide the means to celebrate life through all forms of artistic diversity.

NEWARK ARTS ALLIANCE
 LOCATION: MARKET EAST PLAZA • 276 E. MAIN STREET • SUITE 102
 HOURS: TUES-FRI 12-7 • SAT 10-4 • SUN 12-3
 PHONE: 302-266-7266 • E-MAIL: INFO@NEWARKARTSALLIANCE.ORG
 WEB SITE: WWW.NEWARKARTSALLIANCE.ORG



The NAA's programs are made possible, in part, by grants from the Delaware Division of the Arts, a state agency dedicated to nurturing and supporting the arts in Delaware, in partnership with the National Endowment for the Arts.



AgoraNet, Inc. of Newark sponsors the NAA Web site hosting and management.

NAA Advisory Committee

TERRY FOREMAN executive director, grant writing 302-731-5801
 JEFF SMITH gallery shop
 TERRI GILLESPIE public relations director/ArtForms editor 302-456-1372
 MAUREEN KAMERICK main gallery committee

Project Coordinators

AGORANET webmaster
 PAMELA SKWISH art loop 302-731-9289
 VALERIE PRINCE ArtForms layout & design

Board of Directors

RAY MAGNANI president	MICHELE C. MCCANN
LAURA WAY treasurer	PAUL SCHLOSSER, JR.
BARBARA FRENCH secretary	JEFF SMITH
CAROL BONCELET	KRISTINA WATKINS
NANCY BRESLIN	STEPHEN WEBB
GORDON HETHERSTON	

Thanks for supporting the arts!

RECENT RENEWING & NEW MEMBERS

Renewing Lorie Slavin Deborah & Miranda Matthews	Laura & Rob Tuttle Dragonfly Leathrum	New Randy J. Rado Paula Bell Hudson Whitenight
--	--	--

“BUT WORDS ARE THINGS, AND A SMALL DROP OF INK,
 FALLING LIKE DEW, UPON A THOUGHT, PRODUCES
 THAT WHICH MAKES THOUSANDS, PERHAPS
 MILLIONS, THINK.”

— LORD BYRON

NEWARK ARTS ALLIANCE MEMBERSHIP FORM

NAME: _____

ADDRESS: _____

CITY, STATE, ZIP: _____

PHONE: _____ E-MAIL: _____

EMPLOYMENT: _____

PLEASE SEND ME INFORMATION ABOUT VOLUNTEER OPPORTUNITIES

ANNUAL MEMBERSHIP OPTIONS

\$20-STUDENT \$30-INDIVIDUAL \$50-FAMILY \$100-ORGANIZATION

PREMIUM MEMBERSHIPS – INDIVIDUAL OR FAMILY

\$50 TO \$99-FRIEND \$100 TO \$249-PATRON
 \$250 TO \$499-BENEFACTOR \$500 & UP-PICASSO CLUB

MAKE CHECK PAYABLE TO: NEWARK ARTS ALLIANCE
 276 E. MARKET ST., SUITE 102, NEWARK, DE 19711

FOR OFFICE USE
CK _____
DATE _____
AMT _____

"Usually, organizations apply for this funding on March 1, the same time as their annual general operating request," explains NAA Executive Director Terry Foreman. "However, we didn't know the status of our move at that point and weren't able to meet that deadline.

"We're are very fortunate that the DDOA was so flexible and worked with us to help us out in our time of need," says NAA Executive Director Terry Foreman. "Without this support, we couldn't have made all the necessary improvements to create an exhibition and performance space comparable to what we had in our old location."

The City of Newark's official 250th anniversary print is now on sale. The original painting is the work of contemporary folk artist Carol Dyer.

Signed 22-inch by 30-inch prints are \$100; unsigned are \$50. They can be

purchased at the NAA, with 50% of sales benefiting our organization. If you need one sooner, they're also available in the Planning Department at 220 Elkton Road, and in Mayor Vance Funk's law office at 273 East Main Street.



What's Up With the NAA

Special Events Committee. The NAA has formed this new group, chaired by Board member Michele McCann, to plan and carry out a variety of activities. New members are welcome!

The committee is currently focusing on the grand opening of the NAA in our new space, set for Friday, April 11, from 6-9 p.m. It will also be involved in ongoing events such as wine tastings, opening receptions for art exhibits, volunteer appreciation parties, activities relating to the annual Mosaic Gala fund raiser, and annual members' meetings. New items may include:

- ▶ special art openings,
- ▶ concerts and coffeehouse-style evenings, and
- ▶ performances such as a comedy night, poetry events, etc.

We're looking for interested volunteers who are outgoing, like to plan social events, are well organized, and can follow through on tasks in a timely way. Use your creativity in a new way, meet fun people, and participate in exciting events that benefit the community!

Call the NAA at 302-266-7266 for the next meeting date, or e-mail info@newarkartsalliance.org. It is not mandatory to attend all meetings.

A toast to the grape! "Wine Connoisseur," a guided wine tasting by Deerfield Wines of Newark, will be held at the NAA on Friday, April 25, from 7-9 p.m. A donation of \$20 is suggested.

Classes are coming!

• **Art for home schoolers.** The NAA will be offering art classes for home-schooled children in our new space. A PDF of the brochure is posted on our Web site in the "Classes/Programs" section.

• **Spring schedule.** We'll be announcing our spring classes soon. Brochures will be mailed out and distributed, and the flyer will be posted on our Web site.

New Board member. Stephen Webb of ZZhouse design has joined the NAA Board of Directors. Welcome!

Thanks, DDOA! The NAA has received a \$10,000 Arts Stabilization Grant from the Delaware Division of the Arts. These grants, which provide nonprofit arts organizations with funding for improvements to facilities and/or equipment owned and operated by the organization, are funded through the DDOA's participation in the Arts Consortium of Delaware, Inc. (ArtCo) endowment.

Continued on page 10

ADVERTISE IN ARTFORMS

• Your ad reaches readers who love the arts, both in print (about 750 circulation) and in the download at www.newarkartsalliance.org – for the same low price!

• 2.25" block—\$20 each or \$70 for four insertions

• 2.25" x 4.5" (vertical or horizontal)—\$40 each or \$140 for

four insertions

• Ads do not have to run in consecutive issues to get the multiple-insertion rate

• Camera-ready, or we design – no charge

Contact Terri Gillespie,
302-456-1372 or
swingsambasoul@gmail.com.

Spotlight on Community Arts

Totally awesome actors. Totally Awesome Kids, an acting troupe for children and young adults with cognitive disabilities sponsored by Delaware Theatre Company, presents "Totally Awesome Hamlet" on Monday, March 24, at 7:30 p.m. The performance is free, and reservations are recommended. Info: www.delawaretheatre.com or 302-594-1100.

Let's go downtown ... and dine! Newark's 4th Annual Wine & Dine Downtown is set for Saturday, March 29, from 4-9 p.m. at 13 restaurants on or near Main Street. The dining spots are joining forces with fine wineries, featuring vintages from California, Australia, Chile, Argentina, Italy, and New Zealand.

Specials matching food and wine and tapas-style menus perfect for sampling will be offered at each restaurant. The restaurants will also serve as classrooms for those interested in learning more about wines – from Q&A opportunities to mini-seminars.

The participating restaurants are: Ali Baba, Blue & Gold Club, Caffé Gelato, Courtyard Café/Vita Nova, Cucina di Napoli, Deer Park Tavern, Grotto Pizza, Home Grown Café, Iron Hill Brewery, Klondike Kate's, Pat's Pizzeria & MVP Lounge, Santa Fe Mexican Grill, The Saigon Restaurant.

In addition, there will be strolling entertainment, a free shuttle, free parking, and, for the first 1,500 customers, a commemorative wine glass and carrying pouch.

For details, visit www.eatdowntownnewark.com or pick up a Wine & Dine insert in the March 28 *Newark Post*, at the Wilmington Trust on Main Street, at any of the locations on the day of the event.

The event's sponsors are: United Distributors, Wilmington Trust Company, Commerce Bank, The Newark Post, Commerce Bank, Newark Toyota World, Newark Scion World, Scion, the Downtown Newark Partnership, and participating restaurants and wineries.

Film Fest "reely" wants to know. Which independent films and documentaries are important to you? How would you improve the Newark Film Festival? Your comments will help shape the 4th annual event, which will be held in September at Newark Cinema Center 3. The NFF mission is to screen "Movies That Matter," so to weigh in with your requests and comments, contact Barry Schlecker at barry@network5555.com.

Exhibit shines at Biggs. The Biggs Museum of American Art in Dover has scheduled a number of events and programs in connection with its "Delaware Silver" exhibit, which runs through June 29. The highlight is the

Continued on page 5

Call to Artists Continued from page 8

May 16-June 7: "Young at Art"

Work by artists ages 10-18; prizes will be awarded for outstanding entries

Drop-off: May 9-11

Submission fee: A flat \$5 for up to 3 pieces

Opening reception: Friday, May 16 • 7-9 p.m.

Pick-up: Sunday, June 8, 12-4 p.m.

This project's got your number. The NAA is celebrating Newark's 250th anniversary this year by creating sculptures of a huge 2-5-0, each number decoupage with city memorabilia. They'll be part of our "Impressions of Newark" show in April, appear in various public places, take a ride on a float in the anniversary parade, and be on display at Clayton Hall for the Newark Anniversary Banquet.

The hollow plywood letters were built by carpenter Mark Rahn for a rock-bottom price of \$200. The 2 and the 0 are five feet high; the 5 is six feet. All are about four feet wide and one foot deep. They'll be covered with white canvas before the items are applied.

Want to be part of this project? Here's how.

- Help create the artwork. We'll keep you posted about work sessions. Just send an e-mail to info@newarkartsalliance.org.

- Contribute photocopies (not originals) of your artwork, writings, news clippings, advertisements – anything that says "Newark" to you. Bring or mail them to the NAA at our new address.

OTHER ARTS OPPORTUNITIES

We love a parade! Bring your creativity to the Heritage Parade, celebrating Newark's 250th anniversary. The parade will be held Saturday, April 12, at 3 p.m. on Main Street. To get involved, contact the Newark Parks & Recreation Department at 302-366-7060 or visit www.cityofnewarkde.us.

Interested in exhibiting your work on the **Newark Art Loop**, with monthly shows at several locations on and near Main Street? Each space will accommodate about 12 pieces. Contact Pamela Skwish at 302-731-9289 for details.

Village Imports

All handmade, all Fair Trade
New for spring!



Jewelry, clothes,
garden goodies

165 E. Main St., Newark, DE

302-368-9923 • www.villageimports.com

Open later: Mon-Sat 10-8, Sun 12-5

Call to Artists

WITH THE NAA

April 1-30: NAA Members Exhibit at Caffé Gelato

Drop-off: March 21-26 at the NAA

Pick-up: TBA

About 20 pieces will be included in the show. NAA members interested in being featured can submit up to three pieces of framed, 2-D work, ready to hang, labeled with their name, phone number, title of work, medium, and price. The submission fee is \$5 per piece.

The work will be juried by Michael Brock, owner of Hardcastles Gallery. The exhibit will be displayed throughout April. Work can be purchased by contacting the artist. A 20% commission to the NAA is requested on sales.

For the wine dinner, about \$20 of the \$49-per-person cost will benefit the NAA. For more information, download the PDF of the invitation in the "Events" section of our Web site or contact Terry Foreman, 302-266-7266 or terryforeman58@comcast.net.

April 11-May 10: "Impressions of Newark"

An open, juried show in conjunction with the celebration of the city's 250th anniversary

Drop-off: March 21-26 and April 4-7

Opening reception: Friday, April 11 • 6-9 p.m. (as part of our Grand Opening in our new location)

Pick-up: Sunday, May 11, 12-4 p.m.

Continued on page 9

NAA Exhibition Gallery Guidelines

For juried shows, artists may submit up to three pieces. The submission fee is \$5 per artwork for adult shows. This charge supports promotional and other costs associated with the exhibit. If the fee prohibits you from participating, please write to the Gallery Committee and request a waiver.

Please include label on each entry with your name, the title of the work, the medium (acrylic, raku, computer scan, etc.), your phone number and e-mail address, and a selling price, if applicable. (Work may be marked NFS.) All 2-D work must have a hanging wire on the back and must be framed in keeping with professional standards (no dirty mats, damaged glass, chipped frames, etc.).

Commission on sales to the NAA is 20% for working members (at least four volunteer hours per month), 30% for non-working members, and 40% for non-members.

Spotlight on Community Arts Continued from page 4

permanent installation of The Colonel Kenneth P. and Regina I. Brown Collection of Delaware Silver at the museum.

In addition, there is a loan exhibition, "Masters in Our Midst," which brings together work by some of the most exceptional silver by Delaware smiths from private and public collections across the country. For the schedule of events, call 302-674-2111 or visit www.biggsmuseum.org.

WHERE TO CATCH THEIR WORK

Elisabeth Bard, Heather Siple, and Jeff Smith are three of the nine artists of ArtLane PCG showing their photography in "Expressions of Time" at the Biggs Museum of Art, Dover. A gala opening is set for Friday, April 18, from 5:30-7, with a fee. The show runs through May.

Nancy Breslin, who was awarded a Delaware Individual Artist Fellowship this year, has an exhibit of her work in the Mezzanine Gallery, 820 French Street, through March 28. The show is pinhole photos of amusement parks. Her "Squaremeals" series is on display at San Antonio College (TX), and she recently traveled to the school give a talk about her work.

MamaCita, a group of artists that includes **Megan Greenholt, Jeanna Lane, Karen Hunter McLaughlin, Melissa Tevere, and Karoline Wileczek**, exhibits at the Louis L. Redding Building, Wilmington. The opening reception is Friday, April 4, from 5:30-8 p.m. The show runs through March 28.



"Dandelion Breeze" by Heather Siple

AgoraNet, Inc.

314 E. Main Street, Suite 1
Newark, DE 19711
302-224-2475
<http://www.agora-net.com>

Web Site Design

Web Site Hosting

Software Development

Connecting businesses to the future since 1996 ...

WITH THE NAA

At the NAA unless otherwise listed

NAA/Caffé Gelato Art Exhibit & Wine Dinner

Dinner: Sunday, April 6 @ 5 p.m.
Info & reservations: 302-266-7266
Exhibit: April 1-30

Grand Opening & "Impressions of Newark" exhibit reception

Friday, April 11 @ 6-9 p.m.

"Wine Connoisseur" Wine Tasting

Friday, April 25 @ 7-9 p.m.

NAA ART GROUPS

Call the contact person for information on where these groups will be meeting until the NAA reopens.

Loose Threads – Artists Group

Fiber arts, painting, jewelry & more
3rd Wed. @ 7 p.m.
Info: Laura Spencer, 302-453-1351

NAA Advisory Committee

2nd Wed. @ 6 p.m.

NAA Board of Directors

Call the NAA for date & location

NAA Exhibition Gallery Committee

1st Mon. @ 5:30 p.m.

Info: Maureen Kamerick,
302-453-8866

NAA Gallery Shop Committee

4th Wed. @ 7 p.m.

Info: Jeff Smith, 302-368-1089

NAA Painting Group

1st & 3rd Wed. @ 9:30 a.m.-noon

Bring your own supplies

Info: Pamela Skwish, 302-731-9289

NEWARK ART SCENE

250th Anniversary Celebration

1) Newark Heritage Parade

Saturday, April 12 @ 3 p.m.
Main Street

2) Delaware Pageant

Thursday, April 17 @ 7 p.m.

Friday, April 18 @ 7:30 p.m.

Saturday, April 19 @ 2 p.m.

Roselle Center for the Performing Arts, Univ. of DE

Info: www.enjoydowntownnewark.com

Brandywine Friends of Old Time Music Concerts

Barry and Holly Tashian

Friday, April 18 @ 8 p.m.

Unitarian Universalist Fellowship

Info & tickets: 302-635-3001 or

www.brandywinefriends.org

Chapel Street Players

"Nickel and Dimed"

April 25-May 10

Chapel Street Playhouse

Info & tickets: 302-368-2248 or

www.chapelstreetplayers.org

DelaWhere? Newark Poetry Group

Tuesdays @ 8-10 p.m. – \$3 cover

Central Perk (until NAA reopens)

Suggested for age 15 & up

Info: www.delawhere.org or

302-290-5881

Delaware Accordion Club

3rd Sun. @ 2-5 p.m.

First State Diner

Info: 302-738-7378 or

www.delawareaccordionclub.com

Delaware Dance Company

"Cinderella"

Saturday, April 26 @ 2 & 7 p.m.

Sunday, April 27 @ 2 p.m.

Roselle Center for the Arts, Univ. of DE

Info: www.delawaredance.org

Newark International Folkdancers

No partner necessary

Fri. @ 8 p.m.

George Wilson Community Center

Info: 302-737-7321 or

lsmat@udel.edu

Newark Open Bluegrass/Oldtime Jam

Any skill level, bring instruments

Thurs. @ 7:30-10 p.m.

St. Thomas Episcopal Church

Newark's 4th Annual Wine & Dine Downtown

Saturday, March 29 @ 4-9 p.m.

Downtown Newark

Newark Symphony Orchestra

Chamber Concert Series

"Sublime Strings" – Hayden, Ravel, and Brahms

Saturday, April 5 @ 8 p.m.

Newark United Methodist Church

Info: 302-369-3466 or

www.newarksymphony.org

Scottish Country Dancing

No charge, no partner necessary

Mondays @ 7:30 p.m.

St. Thomas Episcopal Church

Info: 302-368-2318

You've Been Framed

1) March 1-29 – "Big People, Little People"

Portraits on canvas by Andrea Turner

2) April 3-30 – "Colors"

Oil on canvas by Georgie Runkle in a style resembling a patchwork quilt

Main Street

Info: 302-366-1403 or

www.youvebeenframedDE.com

ARTS IN THE AREA

All Delaware unless otherwise listed

Delaware Theatre Company

1) "Totally Awesome Hamlet"

Monday, March 24 @ 7:30 p.m.

2) "The Piano Lesson"

April 9-27

3) Delaware Young Playwrights Festival

Tuesday, April 29 – Staged reading

of middle school finalists' plays

Thursday & Friday, May 8 & 9 –

Productions of high school finalists' plays

Wilmington

Info: www.delawaretheatre.org

"In Harmony" Music Series

Saturdays @ 7 p.m.

March 29 – McDermott's Handy

April 19 – Soca Sanibel Steel Drum Band

Schwartz Center for the Arts, Dover
Info: 302-736-2467 or 302-760-4911

New Candlelight Theatre

"West Side Story"

Through May 18

Arden, DE

Tickets: 302-475-2313 or

www.newcandlelighttheatre.com